



# KINKY IS AS KINKY DOES

If you're looking for a relationship that's a bit ... unconventional, you need to turn on to Easy Street. 24 hours a day, 365 days a year, you can meet real people from right here in Austin who share your interests and lifestyle. Browse ads, look at pictures, read profiles - all absolutely free.

**Place a profile with a photo on Easy Street by August 4, and you'll be entered to win a Forbidden Fruit prize package worth \$150!**



**FORBIDDEN FRUIT**

PUT DOWN THE PAPER AND TURN ON TO EASY STREET

CHRONICLE

[austinchronicle.com/easystreet](http://austinchronicle.com/easystreet)



[www.oneworldtheatre.org](http://www.oneworldtheatre.org)

Jeff Kashiwa,  
Kim Waters & Steve Cole

**SAX PACK**  
JULY 23

**RIPPINGTONS - AUG 11 SOLD OUT**

**ODC/DANCE**  
AUG 13

**PAULA POUNDSTONE**  
AUG 18

SUMMER SEASON 2006

LANNAYA	8/26
FUNK BROTHERS	9/8
KRAMER ON SEINFELD	9/22
MAGIKHANA	9/23
LITTLE RIVER BAND	9/29
JESSE COOK	10/4
FOURPLAY	<b>SOLD OUT</b> 10/27

For Tickets Call:  
(512) 32-WORLD or

**GetTix.NET**  
1-800-443-8849

Austin American-Statesman  
statesman.com

American Airlines



Musicmaker Jordaen

Holland PHOTO IMAGING

ckut 90.5

TIME WARNER CABLE



This project is funded in part by the City of Austin through the Cultural Arts Division and by a grant from the Texas Commission on the Arts.

AMOA

WE'RE AUSTIN'S MUSEUM OF ART

AUSTIN MUSEUM OF ART

## CYCLES IN VIDEO AND LIGHT again + again

MAY 13 - AUGUST 6, 2006

**"AS FAR AS NEW MEDIA AND VIDEO ART GOES, THIS IS ONE OF THE MOST SUCCESSFUL, ACCESSIBLE EXHIBITS I HAVE EVER SEEN."**

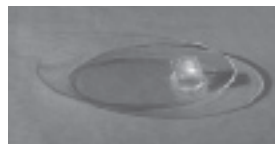
- Cantanker Magazine



Nam June Paik, *Zen for TV*, 1963/2000, Prepared TV set, 18 3/4 x 17 1/2 x 11 inches, Collection of Austin Museum of Art, purchased with funds provided by the Mattsson-McHale Art Acquisition Endowment Fund and other donors, 2000.8, Photo by Jeff Rowe, Austin Prints for Publication.

**"SMARTLY PAIRS THE OBSESSIVELY COMPILED ARTWORKS WITH EIGHT VIDEO AND LIGHT PROJECTS THAT EMPLOY MANY OF THE SAME REPETITIVE PATTERN-MAKING."**

- Austin American-Statesman



### FAMILYLAB - LEARN TOGETHER!

This interactive space is designed to provide families the opportunity to experiment, observe, and respond to the art on view. Free with museum admission.

AUSTIN MUSEUM OF ART-DOWNTOWN

823 Congress Avenue • 512.495.9224

GALLERIES AND MUSEUM STORE

Tuesday-Saturday 10-6 • Thursday 10-8 • Sunday Noon-5

Burt Barr, *The Long Dissolve*, 1998, 9:15 minutes, Black-and-white video, no sound, Collection of Michael and Jeanne Klein, Austin, Photo courtesy of Sikkema Jenkins & Co, New York.

[WWW.AMOA.ORG](http://WWW.AMOA.ORG)

The Austin Museum of Art 2006 Exhibition Sponsors are Berman Family Foundation, Green Family Foundation, Chris Mattsson and John McHale, Bettye and Bill Nowlin, Susman, Tisdale and Gayle Architecture and Interior Design, Rosemary Haggard Vaughan Family Foundation, Vinson & Elkins LLP and Texas Commission on the Arts. 2006 Education Outreach is generously supported by 3M, James Armstrong, Bank of America, Katelena Hernandez Cowles and James Cowles, Institute of Museum and Library Services, Texas Commission on the Arts, donors to the Education Fund, Laura W. Bush Endowment for Education and Outreach, and an anonymous donor. The Austin Museum of Art is funded in part by the City of Austin through the Cultural Arts Division, The Austin Fine Arts Alliance, Museum Trustees, Members, and Patrons.

